



iCLA
International College of Liberal Arts

Study in Japan at the International College of Liberal Arts, Yamanashi Gakuin University

EXCHANGE PROGRAM



山梨県

**YAMANASHI
PREFECTURE**

CONTENTS

Academics	2
Student Life	6
Life in Kofu, Yamanashi	8
Things to See and Do	10
Program Details	12
Course List	13

iCLA AT A GLANCE



5:1

Student to
Faculty Ratio

40+

Nationalities

88%

of Full Time
Faculty Members
Educated Overseas

66%

International
Students



70+

Partner
Universities

90^{min}

from Central
Tokyo

ICLA

The international College of Liberal Arts (iCLA) at Yamanashi Gakuin University is a four year, English-medium, liberal arts college where the primary language of instruction is English. Just 90 minutes west of Tokyo, iCLA combines a multi-cultural learning environment with a beautifully traditional Japanese setting in the shadow of Mt. Fuji.

iCLA offers students the unique opportunity to immerse themselves in the very essence of Japanese culture whilst acquiring a contemporary and globally relevant education at our state of the art facilities. iCLA is one of the newest undergraduate faculties of Yamanashi Gakuin University, and is one of the most diverse programs in Japan, with over 60% international faculty and more than 40 different student nationalities.

YAMANASHI GAKUIN UNIVERSITY

Yamanashi Gakuin University (YGU) is a private institution founded in 1946. The university student body totals over 3,900 students across the undergraduate and graduate faculties. YGU is nationally renowned for achievements in sports and has produced numerous Olympic athletes and coaches. iCLA counts among its faculty decorated athletes like the former karate and judo world champions!



UNDERGRADUATE

Main Language of Instruction:
English

- International College of Liberal Arts (iCLA)

Main Language of Instruction:
Japanese

- Faculty of Law
- Faculty of Business Administration
- Faculty of Health and Nutrition
- Institute of Sports Science

GRADUATE

Main Language of Instruction:
Japanese

- Graduate School of Social Science

ACADEMICS

Education at iCLA spans both depth and breadth, as students study a variety of disciplines while acquiring a deep understanding of their chosen area.

You can learn a variety of academic disciplines ranging from Global Business & Economics, Political Science, Interdisciplinary Arts, Japan Studies, Sociology, Psychology, and Quantitative Reasoning & Natural Science, Data Science to Health & Physical Education. Especially unique are our for-credit experiential workshops in Japanese arts, music, theatre, martial arts, and more. Inter-disciplinary, rigorous and student-centered with a focus on autonomous learning, iCLA's curriculum guarantees you a well-rounded and enriching exchange experience.

MAJOR AREAS OF STUDY:



GLOBAL BUSINESS AND ECONOMICS



POLITICAL SCIENCE



INTERDISCIPLINARY ARTS



JAPAN STUDIES



"I chose economics as my major because I find it pertinent in all levels of society: individual, national, and international. Furthermore, I find it very interesting how economists formulate social observations into theories and equations to solve what are fundamentally social problems. Particularly, I enjoy studying environmental economics, and I believe that this discipline is vital and relevant to today's environmental discourse.

After graduating from iCLA, I will be attending a graduate program in the Netherlands focusing on environment and resource management, which incorporates economics and policy-making. I aim to pursue a career in environmental consulting after my graduate studies."

Didian, Indonesia — *Global Business and Economics Major*



"iCLA's diverse international student body creates an incredible confluence of cultures and customs. In our Political Science classes, the unique perspectives I acquire from my classmates' differing points of view and the comfortable environment that the teacher creates for us to express our opinions really characterizes iCLA.

My nation has faced many political and social upheavals involving Human Rights disruptions. This has enhanced my interest in encouraging ideological change and strengthening the protection of rights in my country and worldwide. iCLA's Political Science Major will make it possible for me to become a future inciter of communication and peace among countries, promoting the reduction of injustice in the world."

Andrea, Nicaragua — *Political Science Major*



"I believe that creativity is the skill of the future. Creativity not just in the sense of producing visual artworks, but also in problem-solving and critical thinking. In every artwork or design, research and process are often overlooked. Having knowledge of various disciplines allowed me to analyze problems or issues with a different perspective; and having that diverse view is essential in ideation of great ideas which any technology or artificial intelligence cannot take over soon.

With my major, I was able to involve myself in projects that sparked my creative growth, while also understanding more about different cultures and concepts and how these [things] should be reflected in any creative work."

April, Philippines — *Interdisciplinary Arts Major*



"I plan to stay in Japan long-term so Japan Studies has value to me. It helps me to understand Japan's culture and history, which I have a particular passion for, in far better detail. Learning about Japan's history, I draw many parallels between its sudden rise and China's, which I believe is of import as Japan will desire to build better relations with China in the near future.

I plan to either begin teaching or go into IT after graduating, or simply continue with graduate studies, all of which pose no significant barriers having studied this major."

Lok, Malaysia — *Japan Studies Major*

GLOBAL BUSINESS AND ECONOMICS



The Global Business and Economics major offers a blend of application and theory, utilizing an applied approach to Business to train future business leaders who deeply understand the interplay between business and society. Our program hones the knowledge and skills associated with the liberal arts and their importance for business such as communication, social, cultural and geopolitical context, ethics, teamwork and critical thinking.

With academic pathways leading to careers in Finance, International Business, and Economics, all courses are studied from a global perspective, giving students the ability to leverage their knowledge of Japanese business culture and prepare for a vocation either in Japan or internationally. All three pathways are embedded in a liberal arts approach that stresses taking a humane point of view, criticality, social responsibility and intellectual depth.

POLITICAL SCIENCE



Questions concerning government policies aimed at achieving economic stability and growth, the gap between the rich and poor, the role of NGOs to affect social and political change, the relations between countries, crises in our democratic institutions, and the path to world peace are all on the research agenda of contemporary political scientists.

Offering academic pathways for students interested in International Relations, Comparative Politics, and Public

Administration, iCLA's Political Science major addresses the fundamental problems facing human society.

Through varied learning and assessment methods, students develop a deep understanding of political science, its various sub-fields, major themes, and analytical techniques leading to enriching careers in local or national government, government services, social enterprise, the NGO sector or academia.

INTERDISCIPLINARY ARTS



Interdisciplinary Arts is an exciting major where students gather inspiration from multiple sources including visual art (Fine Art and Graphic Design), music (Audio Engineering, and Digital & Sonic Art), language arts (Creative Writing, Literary Analysis, and Linguistics), and performance (Film and Theatre). Students gain a rich understanding of their chosen specialization and work through the medium of a wider creative process by exploring these disciplines from practical, theoretical, and historical perspectives.

If you wish, you can choose to pursue a Japan studies theme through Interdisciplinary Arts, with courses in Japanese theatre, film, art and crafts, manga, anime, literature and culture to help you get the most out of this extraordinary country. The interdisciplinary nature of a Liberal Arts education guarantees that students graduate with the transferable skills valued by employers and skills required to succeed in any role in addition to technical knowledge gained in their artistic field.

JAPAN STUDIES



Japan Studies endeavors to investigate and deconstruct the intricacies of Japan by providing students with a comprehensive understanding of this fascinating country, its language and its history. Students can explore Japan's society, politics, international relations and economics, developing a deep understanding of how Japan became the country it is today and its global position in the future. The major also gives students the opportunity to experience Japan's unique

arts, literature and culture, from traditional music and theatre through to contemporary anime and manga.

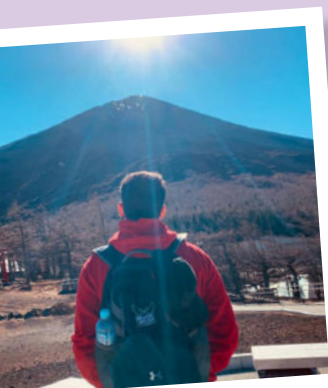
In a true expression of the interdisciplinary nature of iCLA's curriculum, Japan Studies draws on courses from across our whole curriculum to provide a complete learning experience. Tailored study plans can lead our graduates to fluency in Japanese and career opportunities in the media, Japanese corporations, the tourism sector, and academia.

ACADEMICS (continued)

Q&A

Leonardo from
Warren Wilson College (USA)
Economics and Business major

*"What was your
favourite course/workshop
while at iCLA?"*



It's very hard to choose only one so I'd like to highlight at least two courses. The first one is Elementary Japanese taught by Akiyama-sensei. Sensei did an outstanding job by not only teaching the language itself but often associating what we were learning with unique aspects of the Japanese culture. It helped and enhanced my experience in Japan as an exchange student.

The second course is Entrepreneurship taught by Suga sensei. During this course, Suga sensei went through different case studies and simulated our class to develop critical thinking through detailed analyses. He also brought a lot of knowledge from his past experiences, like being a key part of Tully's Coffee's success in Japan.

Throughout the course, we had guest lectures from successful business people of different backgrounds, which was a good networking opportunity during my college experience.

Apart from these four majors of Global Business and Economics, Political Science, Japan Studies and Interdisciplinary Arts, students can also take courses in:

- Sociology
- Psychology
- Data Science
- Natural Sciences
- Quantitative Reasoning
- Health & Physical Education

This framework provides students with the flexibility to explore and appreciate disciplines beyond their specialized area, all of which are undergirded key liberal arts principles of critical thinking and close faculty interaction.

WORKSHOPS

Experiential learning workshops offer unique opportunities to gain hands-on experience in a range of cultural, practical, and creative areas of study. Among others, students can learn traditional Japanese music, arts, and culture such as noh theatre, shakuhachi (bamboo flute) and koto (Japanese harp) sado (tea ceremony), kado (flower arrangement) as well as the Japanese martial arts of aikido, judo and karate.

JAPANESE LANGUAGE

While knowledge of the Japanese language is not necessary to study at iCLA, we warmly welcome students who wish to pick it up and in so doing gain greater insight into Japan and her people. Japanese courses at iCLA are divided into three levels: Elementary, Intermediate, and Advanced. Intermediate and advanced learners may also choose to put their language skills to practice and take courses analyzing current affairs in Japan, or similarities and differences when communicating in their native language and the Japanese language.

Want to know more?

Head to our
Study Abroad Inbound
page for further details.
www.icla.ygu.ac.jp/en/inbound/



Sado (Tea Ceremony)



Koto

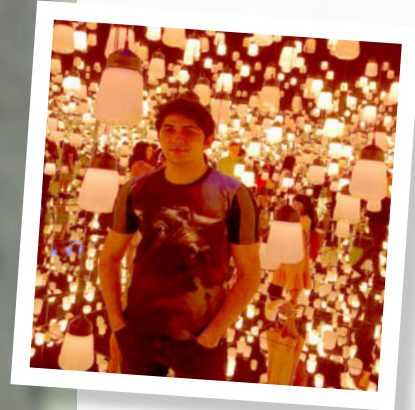


Interpretive Dance

Q&A

Sahib from ADA University (Azerbaijan)
Public Affairs major

"What was your favourite course/workshop while at iCLA?"



All of the courses had knowledge useful for my career. In particular, Professor Rosario Larratta's enthusiasm encouraged me to ask lots of questions and learn something new every day. I took two of his courses – Social Policy, and Methods of Social Research, and enjoyed them very much.



Kado (Flower arrangement)

STUDENT LIFE

Being an iCLA student means living and studying in a place like no other. With state-of-the-art facilities, on-campus accommodation, and a vibrant campus life with many clubs, societies and events, your time here should be exceptional.

Clubs and Societies

YGU has a wide range of sports and arts-related student-led university clubs and societies that warmly welcome international students. In total, there are over 90 clubs and societies to choose from. You are also encouraged to start your own hobby circle and gather friends with similar interests!

Events

Many on-campus events are held throughout the academic year. Special highlights are iCLA's winter and summer galas, and university-wide school festivals. During YGU's jutoku festival, the campus is enlivened with both student and Yamanashi locals-run stalls selling handmade merchandise and festival foods. We also support student initiative events, which are a great chance for you to showcase a cause you are passionate about and grow your leadership skills, while also meaningfully engaging the student community.



Accommodation

Exchange students typically stay in a private room at our on-campus iCLA residence hall, sharing facilities such as showers and a common lounge. Living in our residence hall means being a part of a true cross-cultural community where global friendships are born. Our accommodation is designed so you can find a balance between privacy and social life that best suits your own lifestyle. Some rooms even come with a view of Mount Fuji!

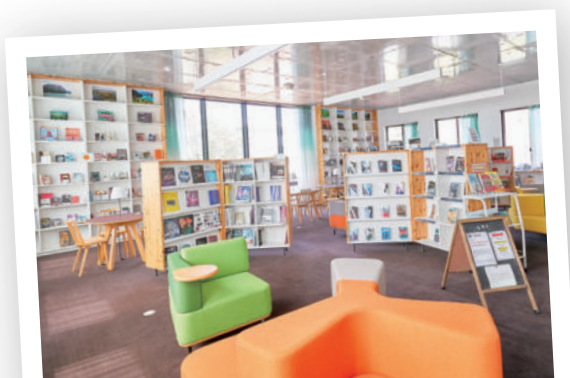
*Depending on availability, Fall 2022/Spring 2023 exchange students may live in the iCLA residence hall, other university housing, or off-campus apartments.

Campus Facilities

iCLA's campus was designed by Toyo Ito, one of the world's most celebrated architects and winner of the 2013 Pritzker Award. Our College is also recognized in the list of Selected Buildings/ National Universities of Japan by the Ministry of Education, Culture, Sports, Science and Technology (MEXT) for its integrated, flexible and open design of learning and living spaces.

Students enrolled in our meal plan are served three hot meals on weekdays in our spacious cafeteria, which also has a cooking studio with multiple cooking units. In our Language Acquisition Center (LAC) there are computers and various digital materials to assist with individual language learning, and students also have access to an extensive library of English and Japanese language books and multimedia materials.

The iCLA building also includes a student lounge, a martial arts dojo, a music studio, a traditional tatami room, and numerous study spaces for individual or group study. As a YGU student you also have access to all the student lounges, cafes and libraries on campus as well as free access to the fully equipped campus gym.





Q&A

Stephanie, exchange student from the University of Aberdeen (UK) majoring in International Relations

How did you feel about the learning and living community in iCLA?



Coming from a large university where professors often do not even know your name, I was really stuck by how close the student-professor relationship is at iCLA. All of my professors were extremely approachable and supportive. The students and administration staff are also very open and friendly which made it easy to make friends and find support for the everyday challenges I faced as an exchange student.



Q&A

Jacqueline, degree student from Hong Kong majoring in Performing Arts

What did you like about living in Kofu city & Yamanashi prefecture?



There is a good balance between convenience and environment in Kofu. I felt like I had everything I needed while also not having to live in a loud and busy city. That being said, Tokyo is only 2 hours away by bus and if you want to get more into nature, places like Shosenkyo or Lake Kawaguchi are very accessible for weekend hikes.



LIFE IN KOFU, YAMAMASHI

iCLA is located in Kofu City, the capital of Yamanashi Prefecture, Japan.

Conveniently located just a 90-minute train ride from the world's most populous metropolis, Tokyo, students here have their pick of entertainment, shopping and cuisine options in Japan's capital city on weekends, while studying in the serene and safe environment that is Yamanashi.

Whether it is delicious food, exciting activities, or unique events that interest you, there is something for everyone here. Merging the ancient and the modern, from its bustling metropolises to its serene natural spaces, the enduring allure of Japanese cuisine, arts and culture continues to delight and fascinate generations of visitors to our shores. Come and experience it all for yourself at iCLA.

How to get to iCLA



GETTING HERE BY TRAIN

1 hr 45 min

3 min

Shinjuku

Kofu

Sakaori



iCLA is 5 minutes away from Sakaori on foot.



GETTING HERE BY BUS

2 hr 20 min

Haneda

iCLA

3 hr 30 min

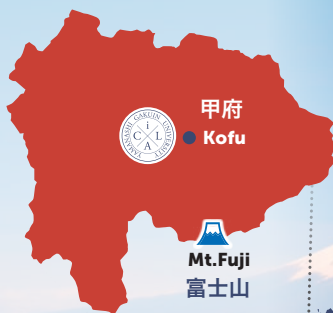
Narita

iCLA

日本

山梨県

YAMANASHI
PREFECTURE



Mt. Fuji
富士山

東京
Tokyo





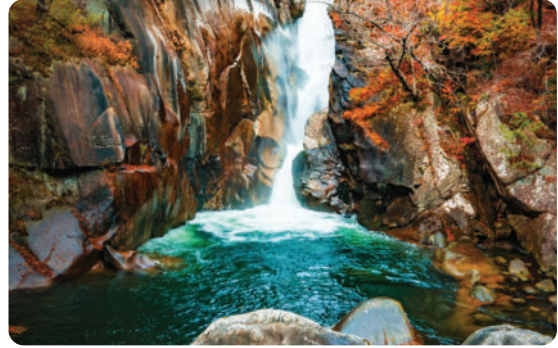
**Whether it is
delicious food, exciting
activities, or unique events
that interest you,
there is something for
everyone in Japan!**

THINGS TO SEE & DO



Mount Fuji & the Fuji Five Lakes

An enduring symbol, world heritage listed Mount Fuji holds sacred significance in Japan. Climbing Fuji and viewing the sunrise from its summit is on the bucket list of many of our international students. The Fuji Five Lakes region lies at the northern foot of mountain, and visitors there have a multitude of outdoor activities to choose from such as hiking, fishing, and even hang gliding.



Shosen-kyo

Shosen-kyo gorge in northern Kofu is designated as a National Special Scenic Site, and holds the title of most beautiful gorge in Japan in a ranking of domestic tourist destinations. Historically, shosen-kyo was a site for Japanese mountain worship, such as the practice of shugendo – a religion unique to Japan that emphasizes physical practice as the foundation of spiritual training. iCLA offers shugendo as a for-credit workshop.



Shingen-ko Matsuri

Yamanashi celebrates the legacy of Takeda Shingen, one of the strongest warlords in Japanese history, at the Shingen-ko Festival annually in mid-April. This festival is recognized as “the largest gathering of samurai in the world”. iCLA faculty and students participate every year – join them in marching through Kofu’s streets decked in samurai armor!



Seichi Junrei

Pop-culture fans can perform a Seichi Junrei, literally meaning making a pilgrimage to places featured in anime, manga and dramas. Travel to locations in the region that have been the setting for popular works like Yurukyan/Laid-back Camp and Yowamushi Pedal, and enjoy camping or cycling like the characters in the shows.



Winter Sports

Students at iCLA wake up every morning to a view of the Southern Alps surrounding Kofu city. For snowboarding and skiing enthusiasts, there are multiple ski resorts within an hour’s reach from campus, or internationally renowned ski resorts in the neighboring prefecture of Nagano. At Hakuba, race down slopes used by athletes in the 1998 Winter Olympics!



Onsen

The many onsen in Yamanashi is a testament to the prefecture’s healthy geothermal activity. One popular destination is Hottarakashi Onsen, located in the mountains north of Kofu. Bathers can soak in spectacular panoramic views of the Kofu basin down below with Mount Fuji in the distance, or gaze upon a ceiling of starry skies. We recommend coming before dawn for a sunrise-vista experience.



Fruit-picking

Long daylight hours and a basin topography have contributed to Yamanashi being one of the largest fruit-producing areas in Japan. The prefecture grows seasonal fruits such as peaches, plums, and cherries. Late summer and early autumn are when you can taste one of Yamanashi's specialties – the Shine Muscat grape. Visit one of the many grape farms here and pick your own bunch of Shine Muscat to savor.



Wine-tasting

Yamanashi is the birthplace of Japanese winemaking and Japan's largest wine-growing region. The prefecture harvests the most grapes in the country, and more than 80 wineries throughout the prefecture produce approximately a third of all wine made in Japan. Enjoy locally crafted wine at winery tours and tasting sessions in wine country!



Hand-carved seals

The practice of using name seals for document verification is a long-held tradition in Japan. Koshu tebori insho are hand-engraved signature stamps made from raw material like Japanese boxwood and crystal, and the insho industry in Yamanashi is responsible for sixty percent of all seals produced in Japan. Why not customize a seal with your name carved in Japanese katakana alphabet as a valuable souvenir of your time here?



Jewelry

Another title Yamanashi holds is that of Japan's leading jewelry producer. Over centuries, abundant rock crystal mined from Mount Kinpu – one of Japan's 100 Famous Mountains – led to the prefecture developing a reputation for gemstone and precious metal processing. Visitors to the many workshops around Shosen-kyo can make their own piece of jewelry to take home.



Fuji-Q Highland

Fuji-Q Highland is arguably one of the most popular amusement parks in Japan. Famed for its variety of hair-raising and record-breaking rollercoasters, the park is a must-visit for any thrill-seeker. If corkscrew turns and vertical drops are not your cup of tea, Fuji-Q also offers more sedate attractions like a ferris wheel, character-themed areas and seasonal events like fireworks and an ice-skating rink.

iEXPERIENCE PROGRAM

iCLA runs a unique iEXperience Program, which is a series of experiential learning opportunities outside of the classroom just for exchange students.

Participate in a guided tour of local shrines and temples with our Professor of Japan Studies, whip up some local cuisine in our cooking workshop, or go on a day tour in picturesque Yamanashi (activities TBC).



PROGRAM DETAILS

Academic Calendar

Exchange students can choose to study at iCLA for one or two semester(s).

Spring Semester:	April 1–early August
Fall Semester:	September 1–end of December

Orientation will be provided for a week before the start of each semester.

Eligibility

- Your home institution has a student exchange partnership with iCLA.
- You have completed at least one academic year at your home institution by the time of entry to iCLA.
- You have a cumulative GPA of at least 2.5 on a 4.0 scale or equivalent.
- You have a TOEFL score of 80 (iBT), 550 (iTP), Cambridge FCE, IELTS 6.0 or equivalent.*

* The above English requirement is exempt for students of certain partner institutions/programs.

Application Procedure

- Have your international office/ exchange coordinator nominate you to iCLA
- Once your nomination is accepted, apply through the HEIapply online portal (an activation link will be sent to your e-mail address)

Spring intake deadline:	October 15
Fall intake deadline:	April 15

Required Items for Application

- An online account and a nomination from your home university
- Personal Statement
- iCLA courses you intend to register for
- Full name and contact details of one referee
- Copy of biodata page of your passport that is valid for at least one year from your intended entry to iCLA
- Copy of a certificate of English language proficiency (if applicable)
- Copy of the official academic transcript in English issued by home institution

Approximate Fee

One semester (4 months)	JPY 422,710–471,710
Two semesters from Spring (9 months):	JPY 814,590–863,590
Two semesters from Fall (11 months):	JPY 955,770–1,004,770

Fees vary depending on accommodation type. The above is based on iCLA's residence hall, and includes room and board (3 meals/day on weekdays), utilities, cleaning and re-painting, optional rental items (bedding set, mini-fridge, bicycle, etc.) and student insurance.

Notes:

- All courses listed here are subject to change.
- Courses are offered only in either Spring or Fall semester, or both semesters. Further details can be found on the website.
- Some courses are cross-listed in conjunction between the subject areas (up to three areas).

MAJOR COURSES

Global Business & Economics

Political Science

Interdisciplinary Arts

Japan Studies

Japanese Language

Quantitative Reasoning & Natural Sciences

Data Science





Health & Physical Education

Sociology & Psychology

<p>Corporate Finance Competitive Strategy Economic Growth: Theories and Evidence Entrepreneurship Game Theory History of Technology in Japan Industrial Organization</p>	<p>Intermediate Macroeconomics Intermediate Microeconomics International Business International Trade & Economics of Globalization Japanese Economy & Business Macroeconomics Marketing</p>	<p>Methods of Social Research Microeconomics Money, Banking, and Financial Markets Operations Management Public Economics Small Business Finance Statistics</p>
<p>Comparative Politics Game Theory Global Politics History of Japan's International Relations International Relations</p>	<p>International Relations in the Asian Pacific Region Introduction to Political Science Introduction to Public Administration Japanese Politics and Diplomacy Methods of Social Research</p>	<p>Nonprofit/Social Enterprise Management Public Policy and Service Statistics Workshop: Political Simulation Game</p>
<p>Art & Communication Art Appreciation Art Studio Audio Engineering Calligraphy and Kanji Culture Comparative Literature Studies Contemporary Japanese Literature Contemporary Literature, Politics, and Economy Creative Nonfiction English for Specific Purposes Fundamentals of Sound and Music History of Art Interdisciplinary Arts Introduction to Language Concepts Japanese Art and Aesthetics Japanese Cinema History</p>	<p>Japanese Society and Culture Japanese Traditional Music Japanese Traditional Theater Kabuki Theater Literature Appreciation Manga & Anime Studies Modern Japanese Society and Culture Through Literature Music Technology Rhetorical Analysis and Composition Samurai Code and Culture Semantics Sociolinguistics World Englishes</p>	<p>Workshop: Acting I Workshop: Acting II Workshop: Directing Workshop: Drawing I Workshop: Drawing II Workshop: Graphic Design I Workshop: Graphic Design II Workshop: Guitar Workshop: Interactive Art Workshop: Interpretative Dance Workshop: Japanese Koto Workshop: Noh Theater Workshop: Painting and Sculpting I Workshop: Painting and Sculpting II Workshop: Shakuhachi Workshop: Traditional Japanese Culture</p>
<p>Calligraphy and Kanji Culture Comparative Literature Studies Contemporary Japanese Literature History of Japan's International Relations History of Technology in Japan Japanese Art and Aesthetics Japanese Cinema History Japanese Economy & Business Japanese History Since 1800 Japanese Politics and Diplomacy Japanese Society and Culture Japanese Traditional Music</p>	<p>Japanese Traditional Theater Manga & Anime Studies Modern Japanese Society and Culture through Literature Samurai Code and Culture Workshop: Experiencing Teaching Japanese Workshop: Fuji Culture Workshop: Japanese Koto Workshop: Noh Theater Workshop: Shakuhachi Workshop: Traditional Japanese Culture</p>	<p>Health & Physical Education 1 (Aikido) Health & Physical Education 1 (Judo) Health & Physical Education 1 (Karate) Health & Physical Education 1 (Nanba) Health & Physical Education 1 (Shugendo) Health & Physical Education 2 (Judo) Health & Physical Education 2 (Karate)</p>
<p>Elementary Japanese 1 Elementary Japanese 2 Elementary Japanese 3 Intermediate Japanese 1 Intermediate Japanese 2</p>	<p>Advanced Japanese Professional Writing in Japanese Kanji in Contexts Current Issues in Japan Socio-Cultural Communication in Japanese</p>	<p>Preparation for the N1 level of the Japanese Language Proficiency Test Preparation for the N2 level of the Japanese Language Proficiency Test Workshop: Experiencing Teaching Japanese</p>
<p>College Algebra Game Theory</p>	<p>Earth Science Math for Liberal Arts</p>	<p>Statistics</p>
<p>Introduction to Computer Science Introduction to Python Programming</p>	<p>Mathematics for Data Science</p>	<p>Coding Bootcamp: Python</p>
<p>Workshop: Interpretative Dance Health & Physical Education 1 (Nanba) Health & Physical Education 1 (Aikido)</p>	<p>Health & Physical Education 1 (Judo) Health & Physical Education 1 (Karate) Health & Physical Education 1 (Shugendo)</p>	<p>Health & Physical Education 2 (Judo) Health & Physical Education 2 (Karate)</p>
<p>Global Politics Japanese Society and Culture Methods of Social Research Nonprofit/Social Enterprise Management Public Policy and Service</p>	<p>Introduction to Anthropology Applied Psychology and Psychosocial Work Introduction to Psychology Psychology of Human Personality Social Psychology</p>	<p>Workshop: Fuji Culture Workshop: Political Simulation Game</p>



CONNECT WITH US

-  **iCLA (International College of Liberal Arts)**
-  **icla.ygu**
-  **icla_ygu**
-  **iclajapan**

**International College
of Liberal Arts (iCLA)
Yamanashi Gakuin University**

Address: 2-4-5 Sakaori, Kofu,
Yamanashi 400-8575 Japan

TEL: +81-55-224-1350

Inquiries: icla.inbound@c2c.ac.jp

www.icla.ygu.ac.jp

*This information in this brochure is accurate as of January 2022.

