

# FREE MOVER

Visiting student programme



# WELCOME BIENVENIDOS BIENVENUE

## SUMMARY

### IPAG

- 3 IPAG at a glance
- 4 Study at IPAG : Paris or Nice
- 6 Living in France
- 8 Campus Life
- 10 Courses and programmes
- 12 Applications
- 14 Contacts

## Why IPAG?

### A State-recognised school

We are an EESPIG-accredited, non profit institution. This accreditation ensures our programmes meet to the priorities of the Ministry of Higher Education and Research.

### Cutting-edge research

Our instruction is grounded in top-tier research. According to Shanghai Ranking, since 2017, we have consistently been ranked as the top 2<sup>nd</sup> best business school in France for economic research.

### Personalised support

We're a school on a human scale. Our instructional and administrative teams are attentive to students' needs and ensure their educational trajectories run smoothly. Our Career Center helps students find their path and develop their professional goals.

### An international outlook

International experiences happen everyday at IPAG. Our campuses welcome students and professors from over 80 different countries.





Beaugrenelle Campus, Paris



Nice Campus

## IPAG at a Glance

You can choose to spend one or two semesters of study at one of the most prestigious and international French Business School and earn credits or validate Business certificates. Located in Paris and Nice, in France. IPAG also organises summer programmes in Luxury Management or Entrepreneurship.



### 2 campuses in France

Campus Located in the heart of the cities



### 3000 students currently enrolled

Campus Located in the heart of the cities



### +75 different nationalities on campus

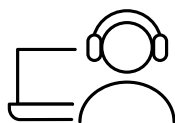


### 80 permanent professors



### 400 IPAG students

studying abroad on exchange or study abroad



### 250 full time staff



### 2 international offices

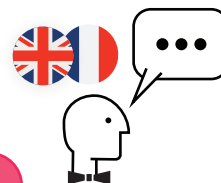
with dedicated teams available for you



### 13500 alumni worldwide

### Certificates of Business available in 5 different majors

- General Management
- Marketing Management
- Financial Management
- Entrepreneurship
- Luxury Management



### Course taught in French and in English


Under & postgraduate




# Study at IPAG

## ABOUT PARIS

**BOARDING PASS**



**PARIS**





**Paris Population:**  
● 2 140 000

**Student Population:**  
● 625 000

**International Population:**  
● 335 000

**Average temperature:**  
● Winter 0-5 °C  
● Summer 20-25 °C

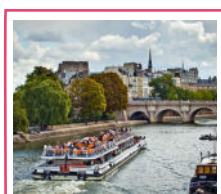
**Transportation:**  
● International airports, subway, tramway, bus, train, bike and car sharing

## 5 things to do in Paris



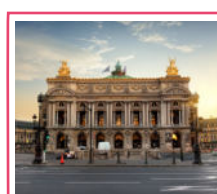
Grab a Velib' from the public bikesharing service and take a ride down the Champs-Élysées from the Arc de Triomphe to the Place de la Concorde.



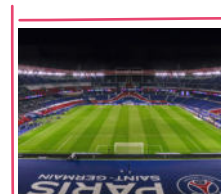
Take a cruise on the Seine at night.



Climb the Iron lady the Eiffel Tower.



Experience the music, shows and emotions of a ballet performance at the majestic Opéra Garnier.



Cheer for PSG, Paris's local football team, at Parc des Princes.





## ABOUT NICE

### BOARDING PASS



#### Nice Population:

● 550 000

#### Student Population:

● 65 000

#### International Population:

● 65 000

#### Average temperature:

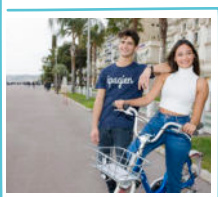
- Winter 7-12 °C
- Summer 25-30 °C

#### Transportation:

- International airports, tramway, bus, train, bike and car sharing



## 5 things to do in Nice



Stroll along the promenade *des anglais* and the pictural old town.



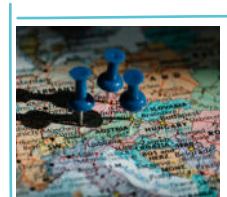
Spend a Day in Monaco, Cannes or Saint Tropez.



Take a train and go to Italy.



French Alps Ski resorts are very close from Nice, make the most of it.



Discover Europe! Roma, Barcelona, Amsterdam, Vienna and more thanks to the airport.

# Living in France

Accommodation, IPAG Housing, Student residence, Shared apartments

## LIVING COSTS

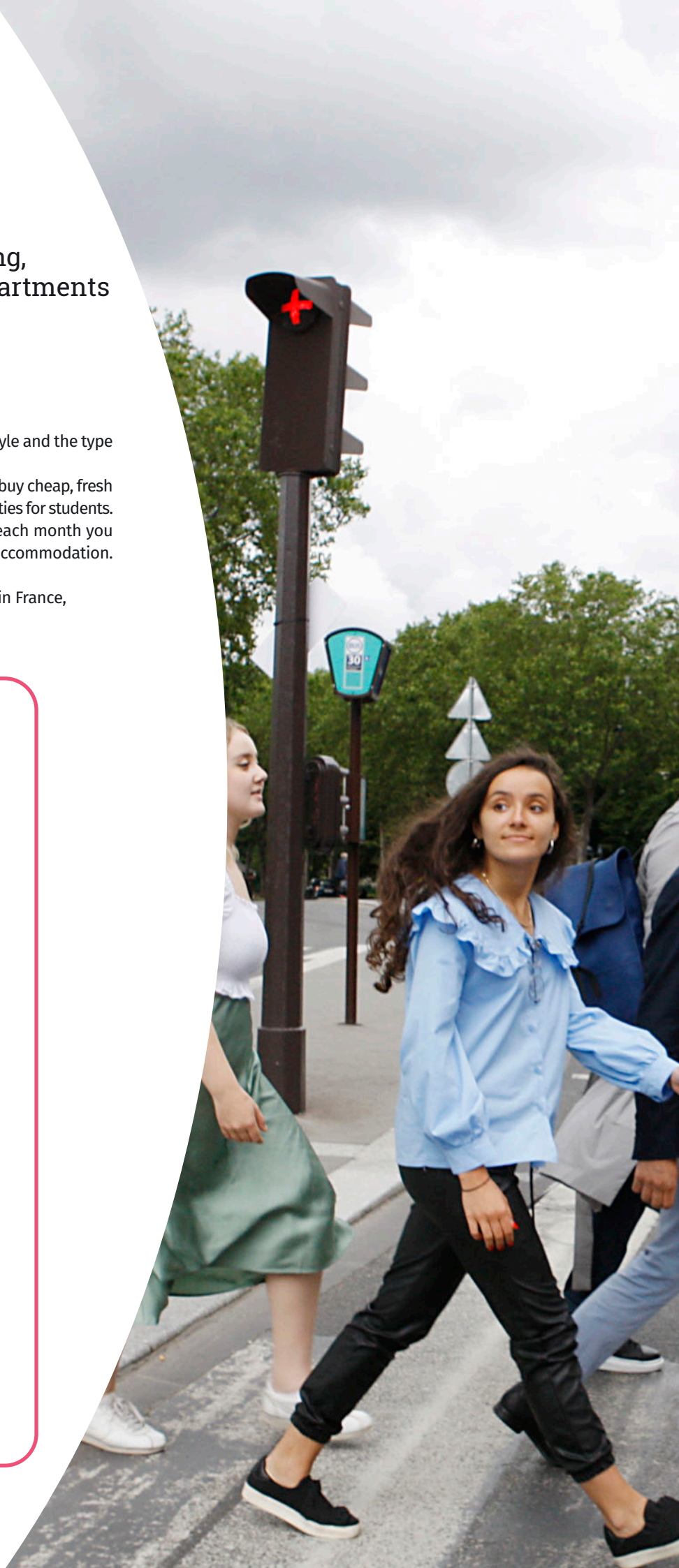
Living costs in France vary depending on your lifestyle and the type of accommodation you choose.

There are many markets in the cities where you can buy cheap, fresh food, as well as many free events, festivals, and activities for students. We recommend a budget of **1,000€ to 1,500€** for each month you plan to study in France. This includes the cost of accommodation.

To get an idea of the cost of some common items in France, see [the list here](#):

### Living costs

- Baguette: 1€
- Espresso coffee: 1,20€
- Packet of pasta: 1€
- Fast food menu: 9€
- Can of Coke: 1€
- Student movie ticket: around 8€
- Daily newspaper: 1-2€
- One-way transport ticket: 1.7 – 2.1€
- Monthly Pass Navigo (Paris): 85€
- A pint of beer: 5€
- One day Velib'ticket: 1,70€  
(bike sharing, includes unlimited free rides of 30min)
- A camembert: 1,9€
- A haircut: Women 50€ / Men 30€
- Doctor's appointment: 25€
- Lunch on campus: 5-7€
- Lunch outside campus: 8-15€







## Studying at IPAG

You can choose to study at IPAG for one or two semesters, beginning in the Fall Semester (September to December) or the Spring Semester (January to May). You are required to enrol for a minimum of **6 to a maximum of 30 ECTS per semester**. Most course units are **6 ECTS**.

## Certificates of Business

You can get a Certificate of Business in the specialisation of your choice, including Entrepreneurship, Luxury, Management, Financial Management, Marketing or General Management. All these certificates worth **30 ECTS**.

## French Language Courses

We offer several language levels for students who want and start from scratch or to specialise in the French language.

## Study Modes

Depending on your course selection, you will have the opportunity to participate in a wide range of interactive learning and teaching environments. These may include lectures, workshops, tutorials, group work, business challenges, case studies, practical sessions, discussion groups, external visits, seminars and more.

## Assessment Methods

Assessments take various forms. During classes, you will be assessed through a combination of assignments, reports, class presentations, class participation and group projects.

## Moodle

IPAG will provide you with all essential Information. All academic info and latest news will be announced on IPAGORA, our Moodle platform. It includes class schedules, learning resources, and links to a range of useful online resources that will help you make the most of your academic experience.



## Campus life

Library and study space  
Student associations  
Health and student support  
Cafeterias



## PROGRAMME OPTION

- IPAG Study abroad / Free mover programme
- Summer Short Programmes
- Students can apply directly at IPAG or through your home university
- A full time semester equals to **30 ECTS**
- Accessible for students with at least one year of studies after High school
- Free movers pay tuition fees directly to IPAG. Exchange students pay tuition fees to their home university.











# Courses and Programmes at a glance

CERTIFICATE IN GENERAL MANAGEMENT		ECTS
22U_GRH_035_BBA3_FA	Business Ethics and Corporate Social Responsibility	6
22U_GRH_034_BBA3_FA	International HR Management	6
22U_ENT_010_BBA3_FA	Business Strategy	6
22U_FIN_006_BBA3_FA	Financial Management	6
22U_ECO_004_BBA3_FA	Data Analysis for Business Management	6

CERTIFICATE IN MARKETING MANAGEMENT		ECTS
22U_GRH_035_BBA3_FA	Business Ethics and Corporate Social Responsibility	6
22U_MKG_074_BBA3_FA	Strategic Marketing Planning	6
22U_ENT_010_BBA3_FA	Business Strategy	6
22U_MKG_073_BBA3_FA	Marketing Tourism	6
22U_MKG_075_BBA3_FA	Advertising and Promotion	6





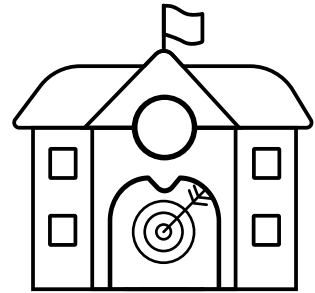
CERTIFICATE IN ENTREPRENEURSHIP		ECTS
22U_GRH_035_BBA3_FA	Business Ethics and Corporate Social Responsibility	6
22U_MKG_074_BBA3_FA	Strategic Marketing Planning	6
22U_ENT_010_BBA3_FA	Business Strategy	6
22U_ENT_021_BBA3_FA	Family entrepreneurship	6
22U_ENT_022_BBA3_FA	Innovation & Lean Startup for Entrepreneurs	6

CERTIFICATE IN FINANCIAL MANAGEMENT		ECTS
22U_GRH_035_BBA3_FA	Business Ethics and Corporate Social Responsibility	6
22U_ECO_004_BBA3_FA	Data Analysis for Business Management	6
22U_ENT_010_BBA3_FA	Business Strategy	6
22U_FIN_005_BBA3_FA	Treasury and International Risk Management	6
22U_FIN_006_BBA3_FA	Financial Management	6

CERTIFICATE IN LUXURY MANAGEMENT		ECTS
22U_GRH_035_BBA3_FA	Business Ethics and Corporate Social Responsibility	6
22U_MKG_074_BBA3_FA	Strategic Marketing Planning	6
22U_ENT_010_BBA3_FA	Business Strategy	6
22U_MKG_020_BBA3_FA	Luxury Brand Management & Environment	6
22U_MKG_016_BBA3_FA	Luxury: Innovation, sustainable development and quality	6

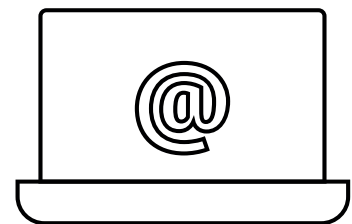
# Application

## HOW TO APPLY



### 1. Acknowledgement

If you are studying in a partner university, your home university will nominate you. If you are not studying in a partner university, please contact IPAG International Office to receive the application link.



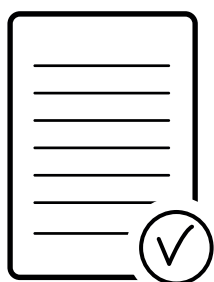
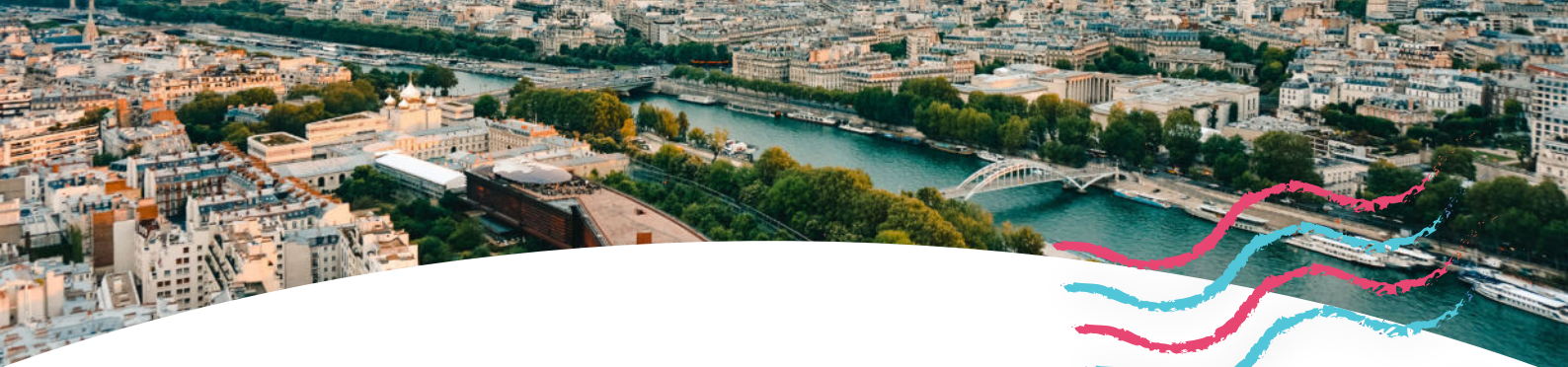
### 2. Application

Then you will receive an email inviting you to apply online. You will have to complete the application and upload the following documents:

- Your passport or ID Card
- A passport size photo
- Most recent transcript of records
- Proof of English or French language
- Cover Letter
- Certificate of insurance

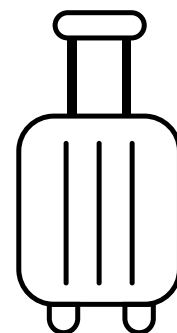
Course selection will be part of the online application. We can provide you with course descriptions upon request.





### 3. Acceptance

Once we have reviewed your application, you will receive an e-mail confirming your acceptance. We will also provide you with an acceptance letter in order to start your visa application at the earliest.



### 4. Pre-departure

Admitted students will receive information package in order to prepare their departure to France. We will also invite you to webinars in order to assist you with practical matters.



The international team is available for further assistance.



## GOING BEYOND TOGETHER



### Contacts



**M<sup>rs</sup> Caroline FERRERO**  
Erasmus Coordination  
International Relations  
+33 (0) 4 93 13 39 20  
Email: c.ferrero@ipag.fr



**M<sup>r</sup> Jaime GARCIA**  
International Experience Officer  
+33 (0) 1 53 63 36 00  
Email: j.garcia@ipag.fr

international.office@ipag.fr

### Nice Campus

4, boulevard Carabacel - 06000 Nice  
+33 (0) 4 93 13 39 00

### Paris Campus

184, boulevard Saint-Germain - 75006 Paris  
10-12 rue du Théâtre - 75015 Paris  
+33 (0) 1 53 63 36 00

To find out more, visit: [WWW.IPAG.EDU](http://WWW.IPAG.EDU)

Follow us on:

